

Building Healthy Communities

Built Environment Momentum Team

June 5, 2010



Discussion Overview

- What's the Built Environment
- Cultural History & Urban Development in City heights
- City Heights Data & Impacts
- Community Issues
- Teams Proposal

What is the 'built environment'?



Cultural History & Urban Development in City Heights

- 1700s and before – Traditional Kumeyaay homeland
- 1770s Kumeyaay people colonized and missionized (removal, enslavement)
- 1848 Treaty of Guadalupe Hidalgo, U.S. annexes Mexican land
- 1852 Kumeyaay people pushed to remote reservations
- 1912 City of San Diego **incorporates City Heights** (4,000 residents)
- 1815 Panama Pacific Exposition (boosters promote City Heights)

Cultural History & Urban Development in City Heights

- 1910's "Great Migration" of African Americans from South – segregated south of the 94 freeway
- 1925 U.S. Border Patrol established to police racial boundaries
- 1942 Japanese Internment
- **1947 I-15 corridor planned through City Heights**
- 1948 Bracero Program
- 1953 American Indian "Termination" (assimilation policy)
- 1954 Operation Wetback
- 1954 Federal Segregation "separate but equal" ends

Cultural History & Urban Development in City Heights

- 1950s Suburbanization, Disinvestment, White Flight
- 1959 **Economic decline** as Fashion Valley, Mission Valley and the College Grove Shopping Center siphoned off merchants and customers from the University Avenue and El Cajon Boulevard corridor
- 1960s-70s Urban decay and blight
- 1965 the San Diego City Council **approved the Mid-City Plan**, proposed to increase density of the community to increase business and commerce.
- 1975 End of war in Vietnam
- 1975 Arrival of refugees from Southeast Asia
- 1978 Arrival of refugees from Ethiopia (famine-related, many are Somali)

Cultural History & Urban Development in City Heights

- 1994 Price **Urban Village**
- 1995 Arrival of refugees from Somalia (civil war 1989)
- 2000 Arrival of “lost boys” from Sudan (refugees from 2nd civil war, 1983)
- 2003 Arrival of Somali “Bantu”
- 2003 War on Terror, ORR restructuring, ICE crated
- 2007Arrival of refugees from Myanmar (Burma)

City Heights Data & Impacts

- **FAMILIES INCOME**

- 35% of families live below poverty compared to the City's 10%

- **HOUSING** (healthy homes and affordability)

- Renter population of 80% compared to the City's 51%.
- Many of the renters live in unhealthy conditions due to mold, rats, roaches
- 50% of the population pay more than 30% of their income in rent

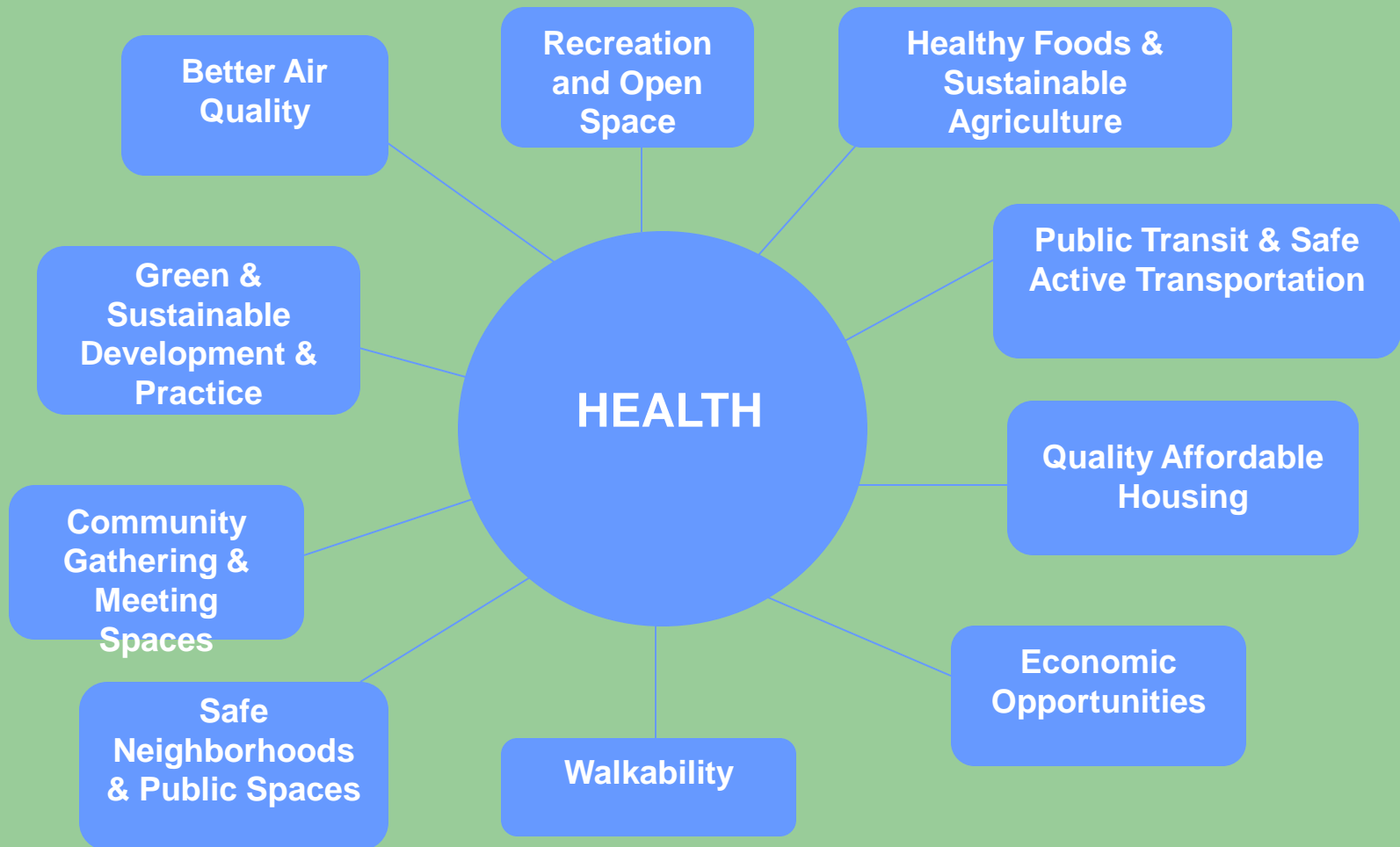
- **JOBS**

- Jobs/housing ratio of .33 compared to the City's 1.33. This means that there is .33 jobs for every house and compared to the City's average of 1.33 jobs for every house.

- **SAFETY** (traffic safety and crime safety)

- The perception of fear is preventing residents from walking the streets and going to parks

Preliminary Community Issues



Built Environment Proposal

- **MAJOR STRATEGIES**

- *Increase Capacity* - build community power and leadership through training and hands-on experience.
- *Community Organizing* - train and support local community organizers from a social justice perspective to address root causes of problems.
- *Engage in local land use planning opportunities* (community/specific plans, general plan, regional plans, etc...)
- *Promote and advocate* policies to ensure safe and healthy homes/communities.